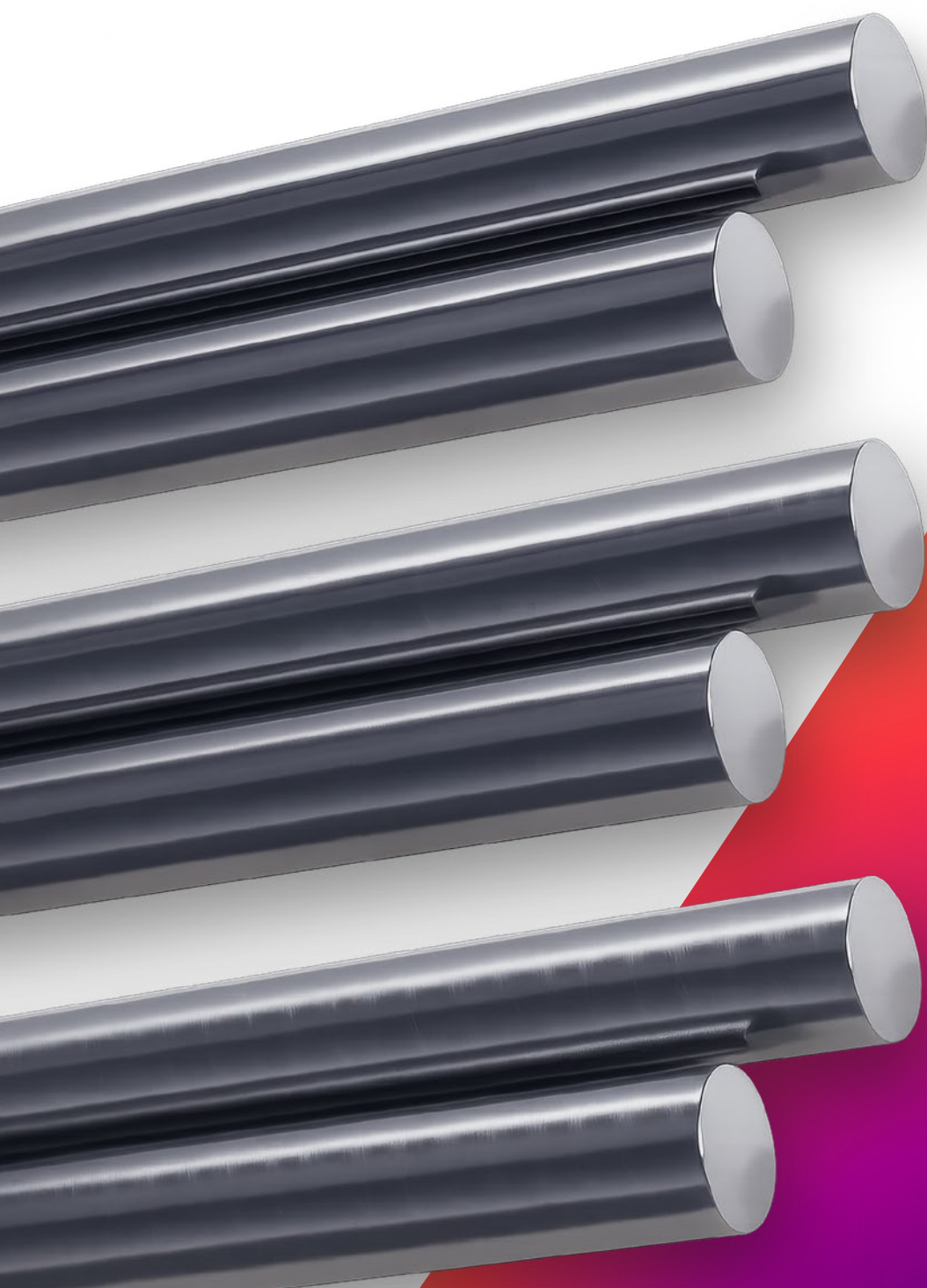




ArcelorMittal

Peeled Bar

ArcelorMittal



Peeled Bar



When you choose **ArcelorMittal Peeled Bar**, you also get the excellence of one of the world's largest companies in the production of bars with high surface finish standards.

Produced to serve multiple sectors and applications, **Peeled Bars offer dimensional accuracy, excellent straightness, and superior surface finish.** Supplied in accordance with strict technical standards, **they are widely used in automotive and industrial applications that demand high performance, reliability, and productivity.**

Accuracy and Efficiency to Ensure the Best Results

Key Advantages:

- Carbon steel or low alloy steel.
- Process: Hot rolling followed by mechanical peeling.
- Finish: Smooth and uniform surface, with removal of rolling discontinuities and guarantee of surface defects in accordance with NBR 8647 standard.
- Dimensional Accuracy: Tighter tolerances compared to rolled bars.
- Product free of decarburization.
- In-line non-destructive testing for detection of longitudinal defects.
- Fixed lengths (3 to 8 meters) or multiples.
- Options for finishing chamfered ends, cut by saws or shearing.
- Applications: Used in precision mechanical components, shafts, gears, and parts that require machining.

Dimensions and Tolerances

Sizes: 25 to 80 mm

Diameter Tolerance: h12 and h11 (h10 and h9 upon request)

Length: 3 to 8 m (shorter lengths upon request)

Nominal Dimension Dn (mm)	Tolerances (mm)			
	h9	h10	h11	h12
18 < Dn ≤ 30	+0/-0.052	+0/-0.084	+0/-0.130	+0/-0.210
30 < Dn ≤ 50	+0/-0.062	+0/-0.100	+0/-0.160	+0/-0.250
50 < Dn ≤ 80	+0/-0.074	+0/-0.120	+0/-0.190	+0/-0.300

Steels

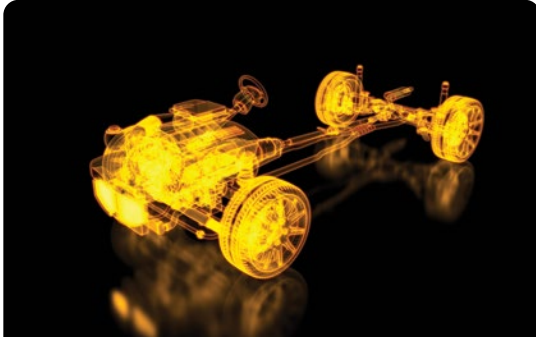
ArcelorMittal has a portfolio of more than 200 types of steels for mechanical construction to meet various levels of quality requirements.

Some of the most demanded steels as peeled bars are as follows:

ArcelorMittal	Similar SAE/DIN	%C	%Si	%Mn	%P	%S	%Cr	%Mo	B (ppm)
1010	SAE 1010	0.08 - 0.13	≤ 0.10	≤ 0.35	≤ 0.030	≤ 0.050	-	-	-
1020	SAE 1020	0.18 - 0.23	0.15 - 0.30	0.30 - 0.60	≤ 0.030	≤ 0.050	-	-	-
1045	SAE 1045	0.43 - 0.50	0.15 - 0.30	0.60 - 0.90	≤ 0.030	≤ 0.050	-	-	-
4140	SAE 4140	0.38 - 0.43	0.15 - 0.35	0.75 - 1.00	≤ 0.030	≤ 0.040	0.80 - 1.10	0.15 - 0.25	-
51B60	SAE 51B60	0.58 - 0.64	0.15 - 0.35	0.75 - 1.00	≤ 0.030	≤ 0.040	0.70 - 0.90	-	5 - 30
HK54	SAE 9254	0.51 - 0.59	1.20 - 1.60	0.60 - 0.80	≤ 0.030	≤ 0.040	0.60 - 0.80	-	-
HK60	SAE 5160	0.56 - 0.64	0.15 - 0.35	0.75 - 1.00	≤ 0.030	≤ 0.040	0.70 - 0.90	-	-
PL41	DIN 41Cr4	0.38 - 0.45	0.15 - 0.30	0.70 - 0.85	≤ 0.030	≤ 0.035	1.05 - 1.20	-	-
PL48	SAE 1045H	0.46 - 0.50	0.20 - 0.30	0.80 - 0.90	≤ 0.030	≤ 0.030	0.15 - 0.20	-	-
MC18	DIN 20MnCr5	0.17 - 0.22	0.15 - 0.30	1.00 - 1.20	≤ 0.020	≤ 0.025	1.00 - 1.10	-	-

1. Other steels are available in ArcelorMittal Brazil's portfolio.
2. Informative chemical composition. Supply subject to prior consultation.

Applications



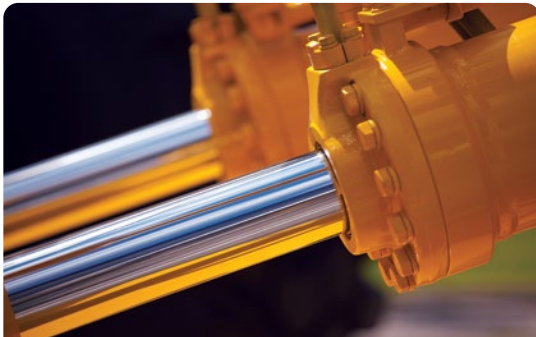
Automotive Industry

- Steering systems
- Transmission systems
- Suspension systems
- Various components



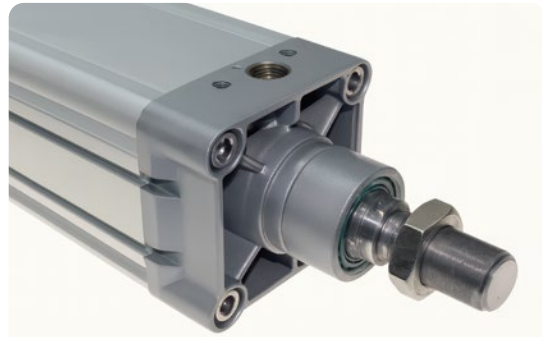
Wind Energy

- Fasteners for oil and gas
- Fasteners for wind towers
- Fasteners for anchor bases



Hydraulic Components

- Cylinders
- Hydraulic articulation arms



Machinery

- Electric motor shafts
- Industrial pneumatic motor shafts

Quality Control and Certifications

Quality Control

In-line inspection for detecting surface defects and ultrasound for detecting internal defects (upon request), in addition to ensuring dimensional tolerance.

Certifications

- ISO 9001 – Quality System
- IATF 16949 – Automotive Quality
- ISO 14001 – Environment
- ISO 45001 – Occupational Health and Safety
- ResponsibleSteel™



Customer Service Center
0800 015 1221
brasil.arcelormittal.com



ISO 9001
ISO 14001
ISO 45001
BUREAU VERITAS
Certification



IATF 16949:2016

BUREAU VERITAS
Certification

